

TRV3RF
SUPER QUIET
TRV HEAD
QUICK GUIDE



Manufacturer: SALUS Controls plc
Units 8-10, Northfield Business Park, Forge Way,
Parkgate Rotherham, S60 1SD, United Kingdom

Importer: Salus Controls European Distribution sp.z o.o.
ul. Szamocka 8, piętro 6., 01 748 Warszawa, Poland

UK: tech@salus-tech.com
DE / NL: info@salus-controls.de
PL: poland@saluscontrols.com
FR: technicalsupport@saluscontrols.fr
RO: tehnic@saluscontrols.ro
DK: Support@salus-controls.dk



www.saluscontrols.com

SALUS Controls is a member of the Computime Group. Maintaining a policy of continuous product development SALUS Controls plc reserve the right to change specification, design and materials of products listed in this brochure without prior notice.



Introduction

The TRV3RF is an advanced, cutting-edge Thermostatic Radiator Valve (TRV) and the quietest on the market designed for seamless home comfort and energy efficiency, making it ideal for noise-sensitive environments. The TRV3RF features a sophisticated modulating head, enabling precise control by gradually opening or closing the valve based on room temperature.

Using an intelligent temperature compensation algorithm, the TRV3RF dynamically adjusts to environmental factors such as radiator heat, drafts, or sunlight. This ensures consistent, accurate room temperatures while optimizing energy efficiency. Perfect for modern, energy-conscious homes, the TRV3RF delivers tranquility, comfort, and sustainability in one innovative package.

Product Compliance

This product complies with the essential requirements and other relevant provisions of Directives GPSR 2023/988/EU, RED 2025/138/EU and RoHS 2017/2102/EU. The full text of the EU Declaration of Conformity is available at the following internet address: www.saluslegal.com.
(e) 2405-2480MHz, <14dBm

Safety Information

Use in accordance to national and EU regulations. Use the device as intended, keeping it in dry condition. Product for indoor use only. Installation must be carried out by a qualified person in accordance to national and EU regulations.

Box Content



Device Compatibility

The TRV3RF is compatible with the IT600 series (SQ610, VS10RF, VS20RF, SQ610RF) and Elypso series. Please note that it functions exclusively with UG600, UGE600, and UG800 gateways.

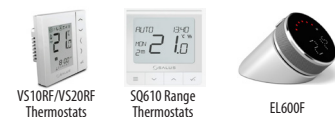
Gateways



Receivers



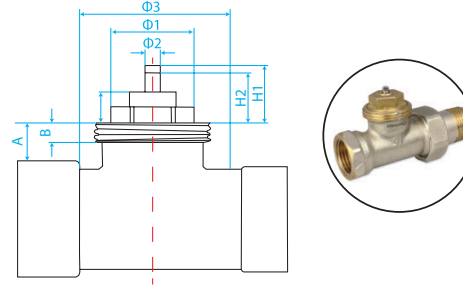
Thermostats



Valve compatibility

The TRV3RF includes three adapters designed for compatibility with a wide range of valves available on the market. Before beginning the installation, please verify that your existing valves are compatible with the provided adapters:

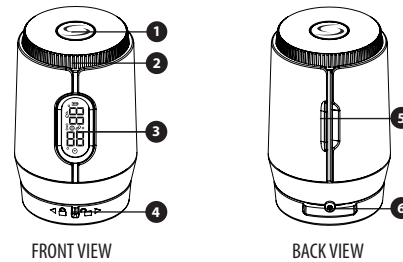
- **M28** (with or without metallic washer)
- **M30** (metallic washer NOT required)
- **Danfoss** valves (metallic washer NOT required)



M28 (with washer)	M28 (without washer)	M30
A > 9.5 mm	A > 9.5 mm	A > 6 mm
5.3 < B < 8 mm	5.3 < B < 8 mm	B < 5.1 mm
Φ1 < 21 mm	Φ1 < 21 mm	Φ1 < 7.2 mm
Φ2 < 7 mm	Φ2 < 7 mm	Φ2 < 25 mm
Φ3 < 35.5 mm	Φ3 < 35.5 mm	Φ3 < 36.5 mm
H1 < 12.7 mm	H1 < 12 mm	H1 ≤ 15.5 mm
H2 > 8.7 mm	H2 > 8.0 mm	H2 ≥ 11 mm
7.5 < H3 < 8 mm	H3 < 7.5 mm	H3 ≤ 10.2 mm

*For Danfoss valve we can proceed with the provided RA adapter.

Product description



- | | |
|----------------------------|--------------------------------|
| 1. Function / Setup Button | 4. Lock / Unlock Valve Adapter |
| 2. Dial Ring | 5. Battery cover |
| 3. Digital Display | 6. Locking pin |

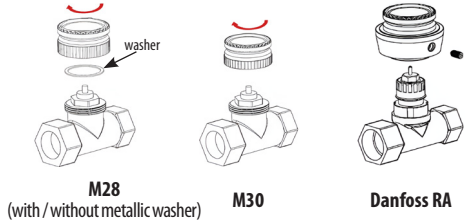
Icons and Display

	Battery Level
	Key Lock - 10s press
	RF Status
	Off Mode (Frost Protection)
	Binding Status
	Schedule Mode
	Temperature and Other Information for Vertical Positioning of TRV
	Temperature and Other Information for Horizontal Positioning of TRV



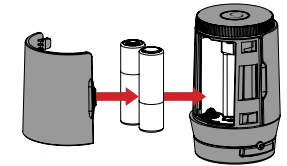
Installation Process

- 1 Mount the correct adapter on the radiator's valve.
M28 - Please check if your valve requires the metallic washer for proper installation and follow below instructions.
M30 - Follow the instructions below.
Danfoss Valve - Follow the instructions below.

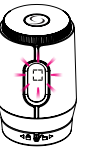


i The adapter must be securely screwed onto the valve by hand. Avoid using tools to tighten the adapter, as this could damage the components or affect compatibility.

- 2 Remove the battery cover and insert the batteries in the TRV as shown in the image below.

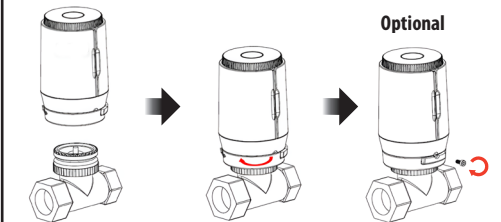


i Upon initial power-up, the display will indicate the symbol . This symbol will remain visible until the actuator stem is fully retracted. No input needed while this symbol is active.



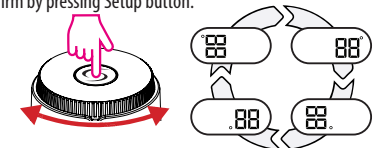
- 3 Mount the TRV head on the radiator valve with the selected adapter.

Optional: The TRV features a locking pin secured with the supplied hex screw, which can be tightened using an Allen key to prevent unwanted dismantling from the adaptor and ensure added security.

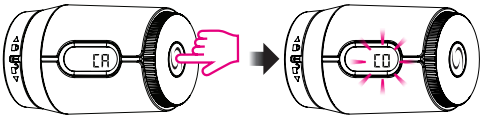


- 4 Adjust the display orientation by using dial ring to accommodate the TRV's installation in any position, whether horizontal or vertical.

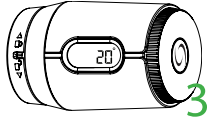
Confirm by pressing Setup button.



5 Calibration mode - After adjusting the display orientation, the TRV will enter calibration mode, and the screen will display:

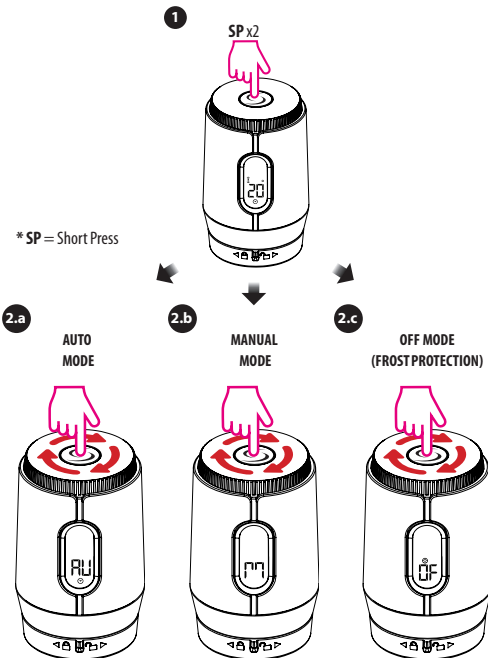


Once the calibration is complete, the screen will display the setpoint temperature.

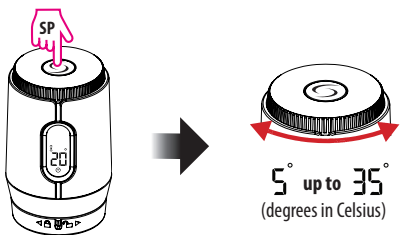


Ensure the valve is installed prior to calibration. Failure to do so will result in the display showing the E3 error code.

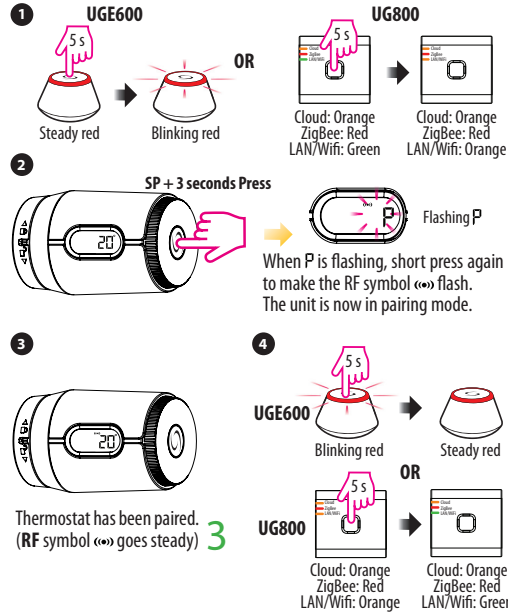
Operation Modes



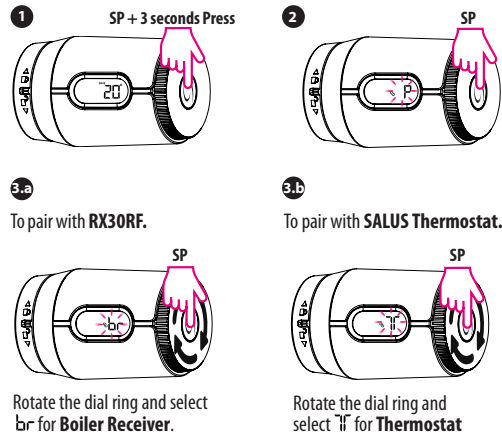
To adjust temperature, short press the button then turn dial to desired temperature.



TRV Pairing with Gateway in Offline Mode



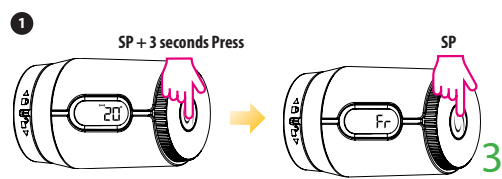
TRV Pairing with Thermostat and/or Receiver in Offline Mode



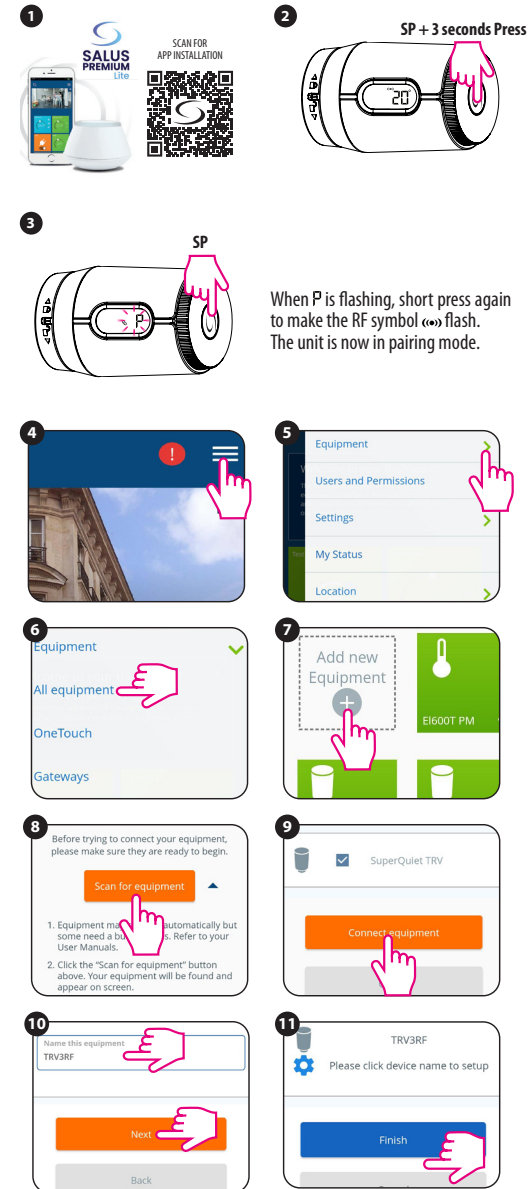
*SP = Short Press

Make sure that all devices that is desired to be paired are in pairing mode at the same time to ensure the connection process..

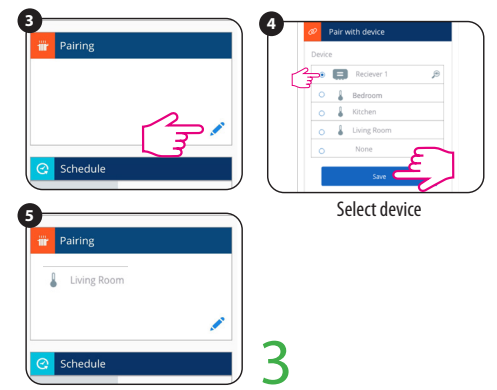
Factory Reset



TRV Pairing with Gateway in Online Mode

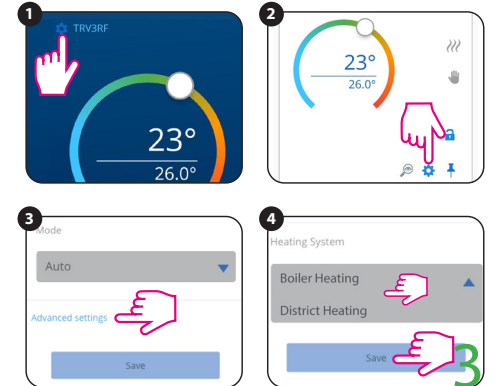


TRV Pairing with Devices in Online Mode



Heating System Selection

For optimal functionality, the Heating System selection must align with your home's specific heating setup.



In-App Advanced Options

Option	Description
Open window detected	Enable / Disable If TRV detects that the room window is open = "OP" will appear on the display. The valve will stay closed for 30 minutes, unless the temperature increases by at least 0.25°C or more.
Mode	Auto: follows the preset schedule Manual ON: TRV is fully open (bypasses the thermostat). Manual OFF: TRV is fully closed (bypasses the thermostat).
Low battery valve position	Normally Open – Keeps the valve open when the battery is low. Normally Closed – Shuts the valve off to save energy when the battery is low.
Heating control	Boiler System – Controls a private heating system District Heating – Adjusts for centralized heating networks.
Temperature calibration	Adjusts the displayed temperature to match the actual room temperature.
Valve minimum opening point	Default: 8 (range: 5-35) Set the lowest valve opening level. Useful if auto calibration doesn't allow enough heat through. Caution! Too high value can cause constant flow when TRV is closed.

*For more details and information, please check the online full manual.